

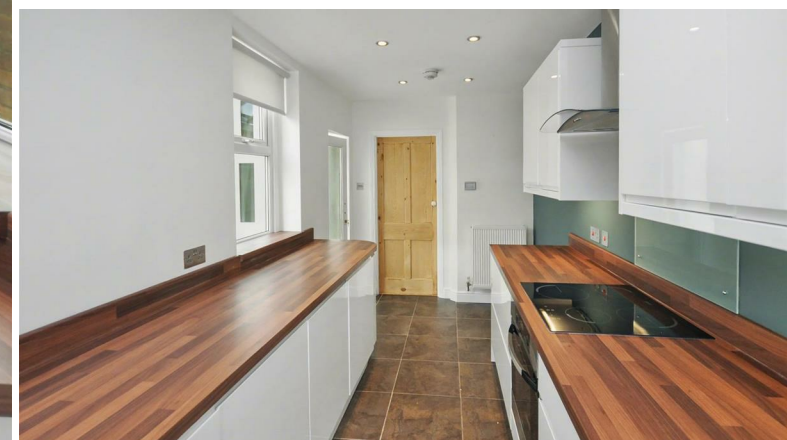


ehB
RESIDENTIAL

Your Property - Our Business

41, Manor Road, Leamington Spa

£1,450 PCM



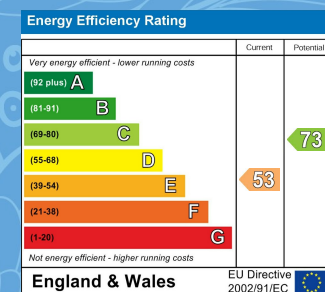
EHB Residential are delighted to offer this stunning two bedroom town house offering modern and contemporary accommodation, whilst still incorporating traditional features. The property is in excellent order throughout and is located in a great residential area close to local amenities including a local supermarket, primary and secondary schools.



- Residential Estate Agents
- Lettings and Property Managers
- Land and New Homes Agents

Leamington Spa Office
Somerset House
Clarendon Place
Royal Leamington Spa
CV32 5QN

01926 881144 hbresidential.com



Also at: Warwick, 17-19 Jury St, Warwick CV34 4EL